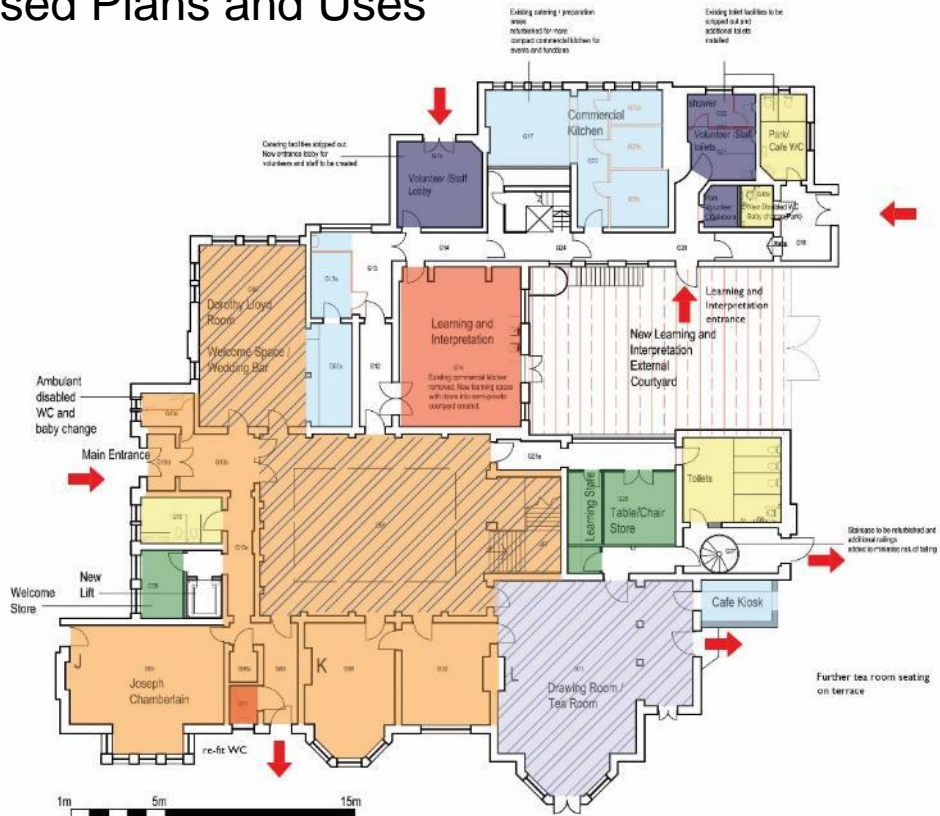












# Proposed Plans and Uses

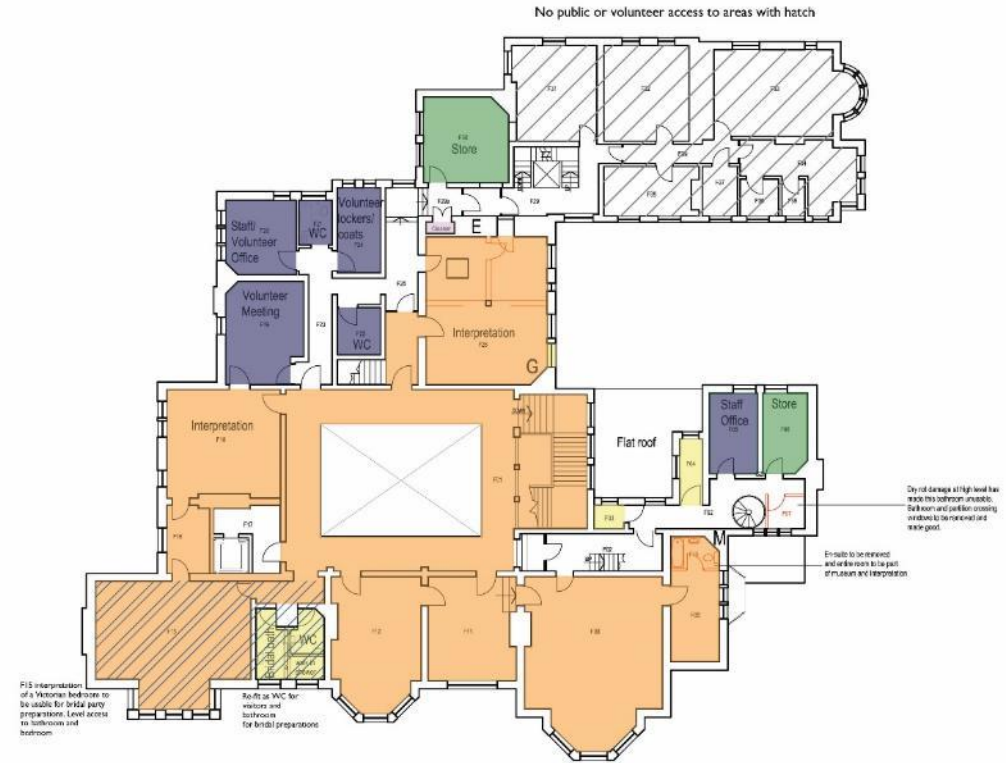


New museum, dedicated learning space, tea room, reduced events catering kitchen, new park volunteer facilities, toilets for park users and a new lift to the first floor for visitors.

## GROUND FLOOR PLAN

KEY :

 Museum / Interpretation	 Staff / Volunteers
 Learning / Schools	 Catering
 Tea Room	 Functions (specified times)
 Circulation	 Storage
 Public WC facilities	 No public access



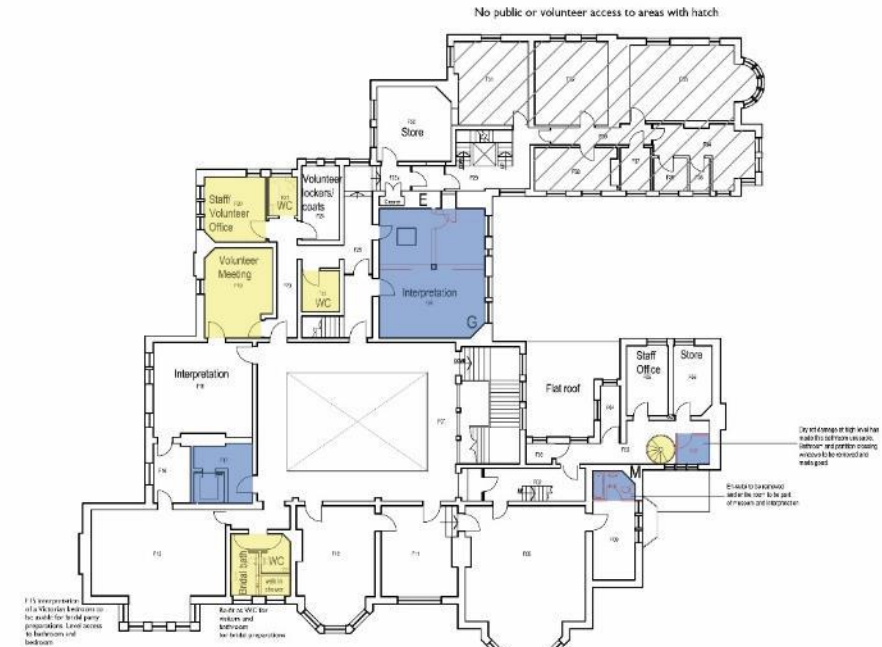
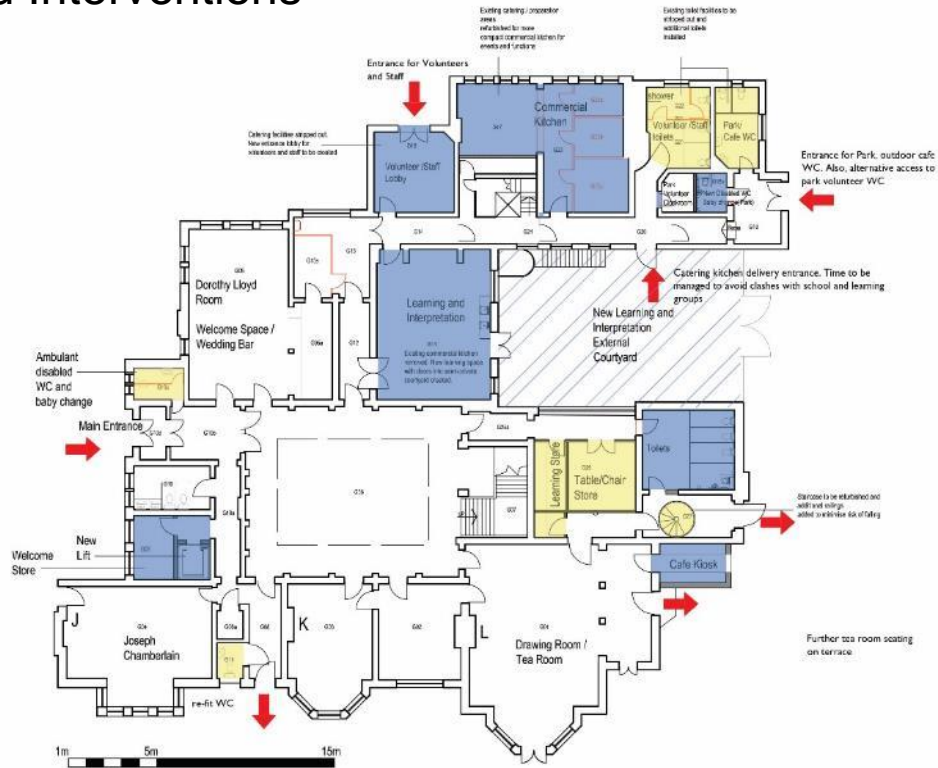
New interpretation spaces, volunteer/staff offices and meeting spaces; and improved bridal party facilities for wedding offer

## FIRST FLOOR PLAN

Works to the second floor include essential fabric repairs and minimal services upgrades,

## SECOND FLOOR PLAN

# Proposed Interventions



Interventions are focused on essential repairs, an overhaul of the building services and improving access for all to Highbury. This includes a new lift, improved toilet facilities for visitors to Highbury and the Park; and small new build kiosk to support a tea room and park users.

## GROUND FLOOR PLAN

KEY :

- Architectural intervention / change of use
- Re-fit/refurbishment of space with similar/same use
- Essential repairs and essential services renewal for building use
- Essential repairs and minimal services renewal
- Removal of existing fabric

The proposed first floor interventions are also focusing on the essential building repairs and enhancing the visitor experience with new museum interpretation. The north east wing will be developed at a future date when funds allow.

## FIRST FLOOR PLAN